

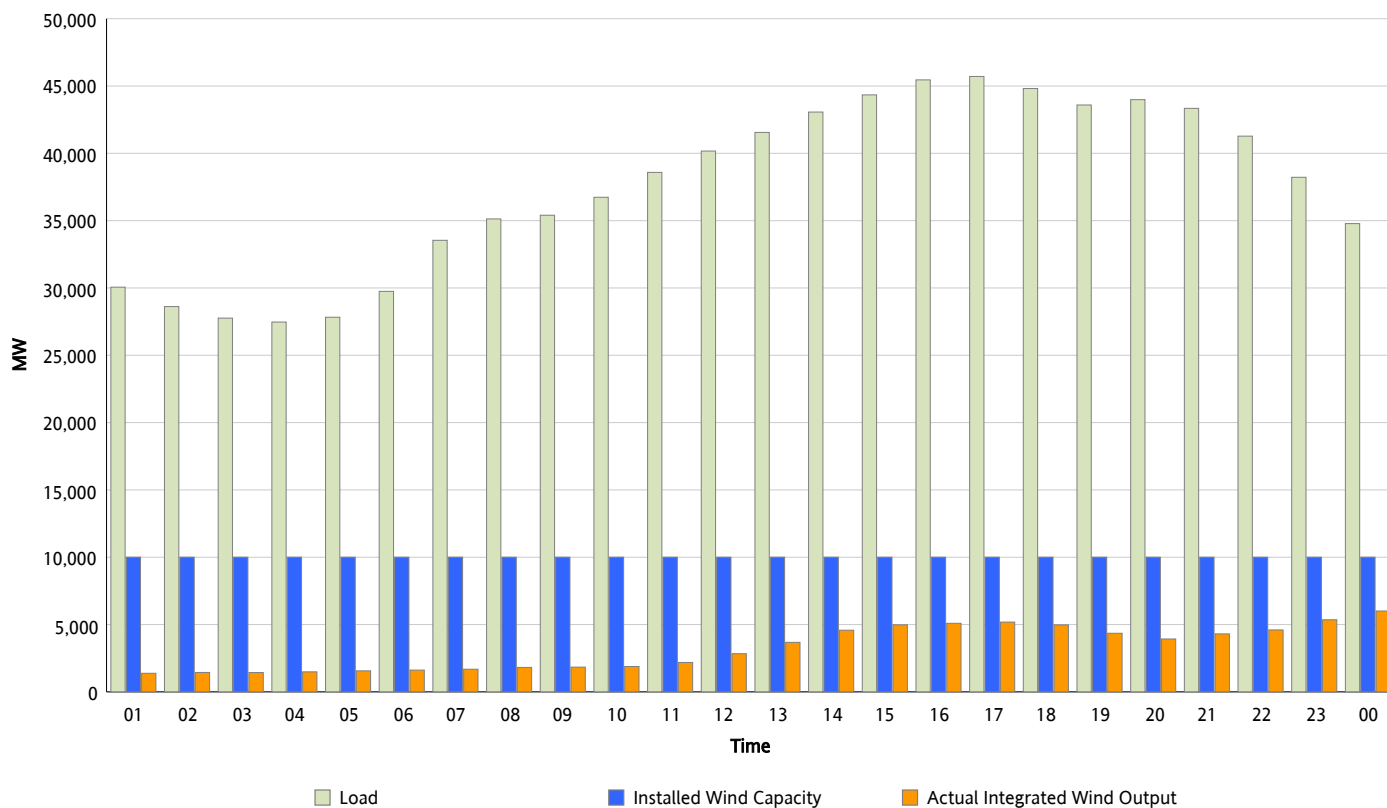


ERCOT Grid Operations

Wind Integration Report : 10/11/2012

Peak Load	45,711 MW
Load Peak Hour (HE)	17
Wind Over Peak	5,184 MW
Wind Record 06/19/12	8,368 MW
Max Wind Value*	6,101 MW
Wind Peak Time	23:37
Wind Integration %	17.71 %

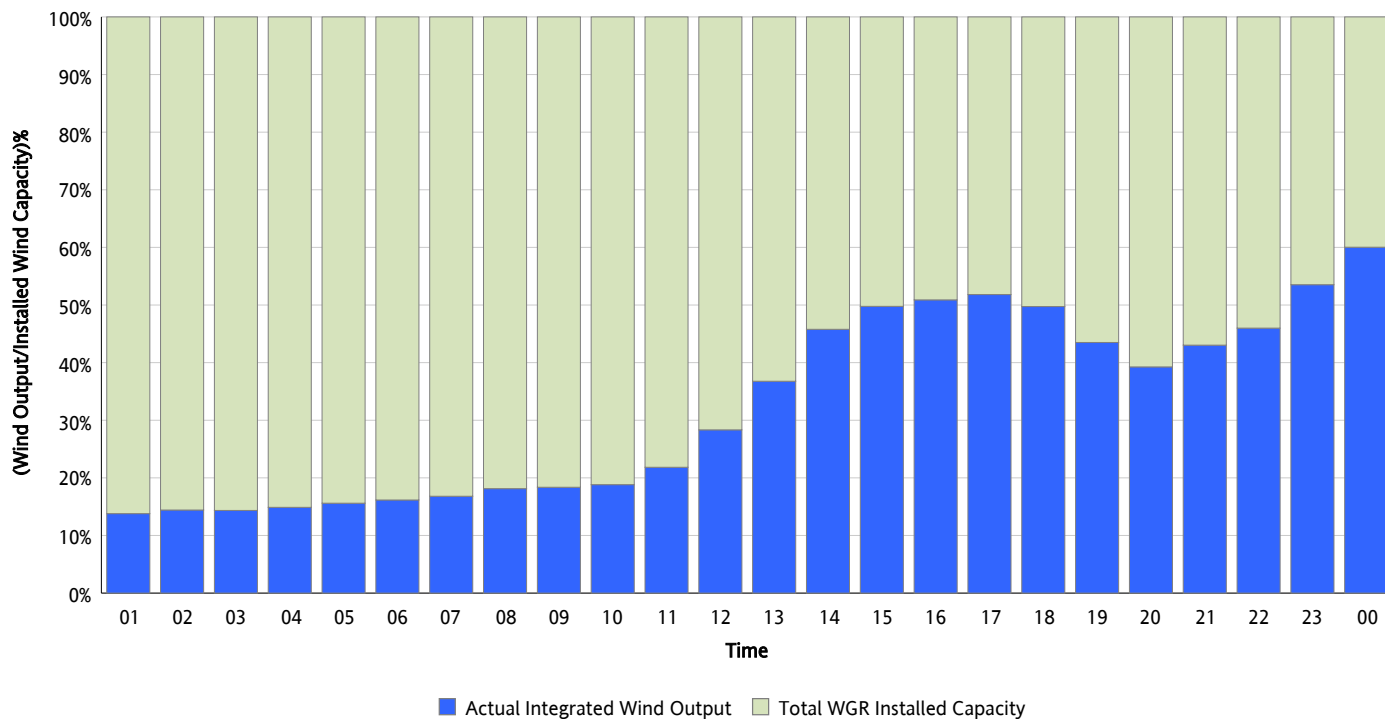
Hourly Average Actual Load vs. Actual Wind Output
10/11/2012



* Wind Record and Wind Max represent instantaneous values and the rest of the values are integrated over the hour

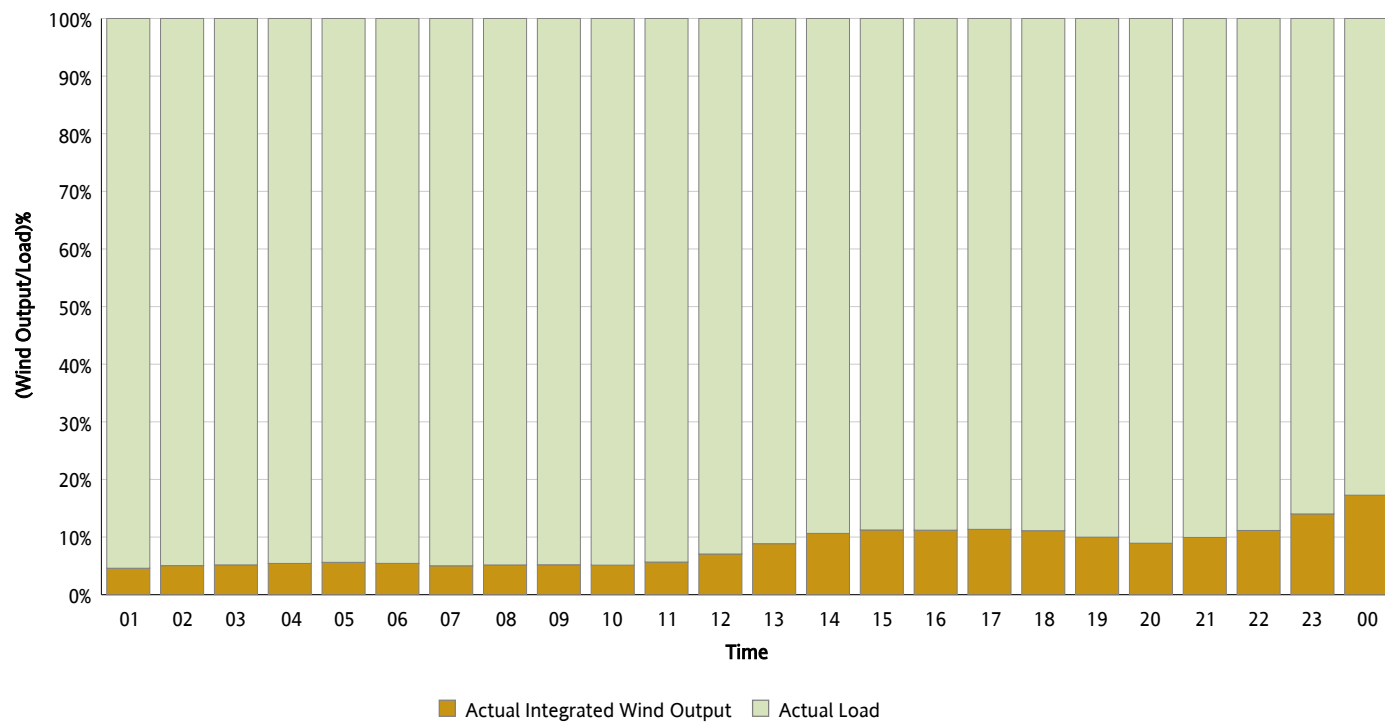
Actual Wind Output as a Percentage of the Total Installed Wind Capacity

10/11/2012



Actual Wind Output as a Percentage of the ERCOT Load

10/11/2012



ERCOT Load vs. Actual Wind Output

10/04/2012 - 10/11/2012

